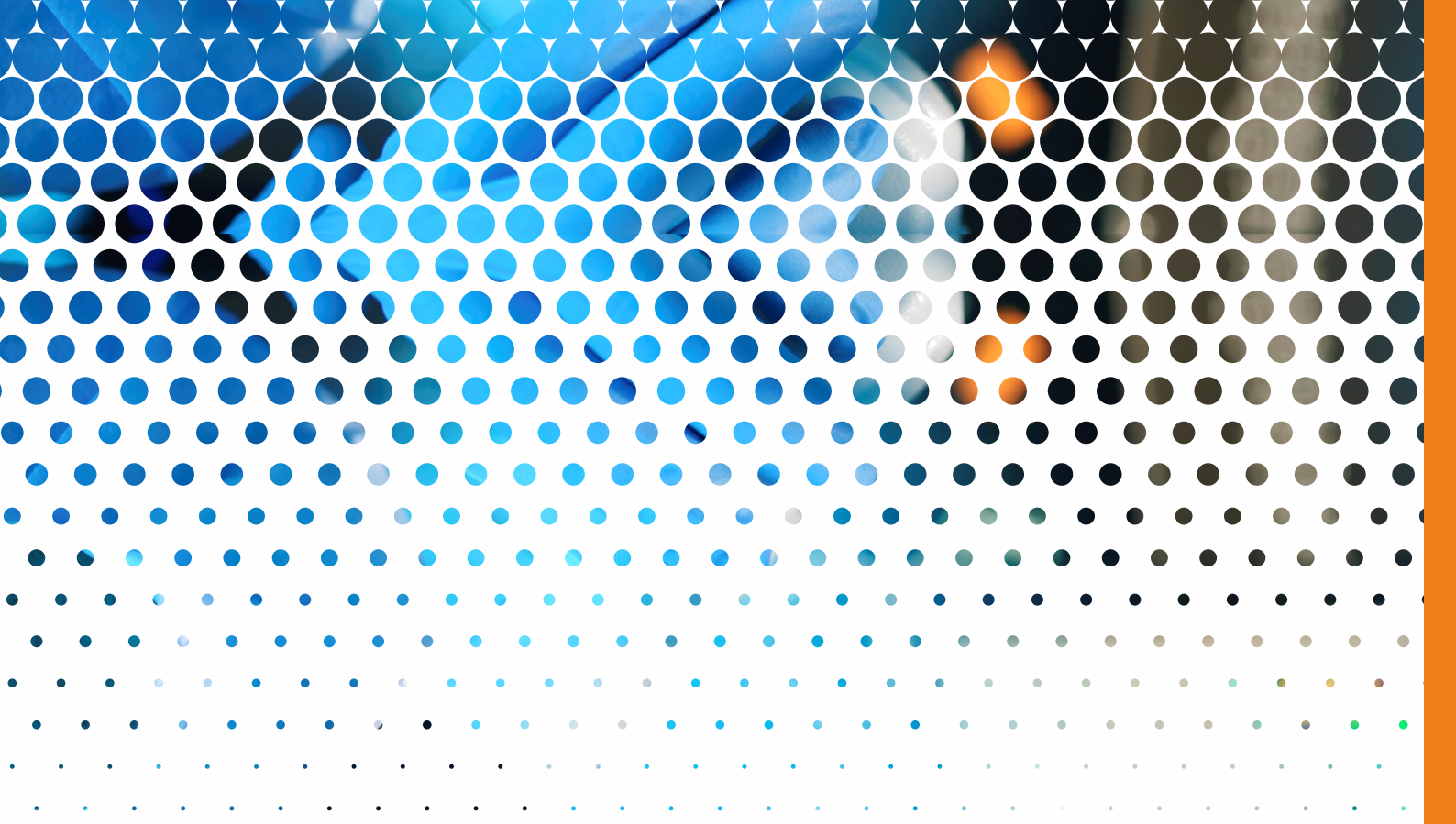




*Laboratory
Filtration
Catalogue*



DORSAN[®]

LIVING FILTRATION





Living *Filtration*

www.dorsanfiltration.com

At Dorsan® we are passionate about creating filtration products, we love what we do and we put all our efforts into it. For this reason, our Company motto, “**Living Filtration**”, is not casual or insignificant. We intensely live and feel the processes of **filtration**.

**“In laboratories
we are recognized
for our high
quality materials
and high
performance”**

Since Dorsan's birth, we have aspired to be **the market leader** in liquid filtration solutions for laboratories. Our pursuit of excellence is the most motivating challenge for the progress of our company.

We source raw materials of proven quality, from virgin cellulose fibres and pure cottons linters for our premium grade analytical filter papers, through to microfiltration membranes in various materials such as cellulose acetate, nylon, PTFE or PVDF. Hence, at Dorsan® we manufacture the most diverse and optimum product lines available on the market.

At present, we have production centres in **Spain, Germany and India**. Our vision is to have branches and commercial offices on all continents. Today, one of our greatest reasons for pride is to have **customers in 57 countries** that cover a vast geographical territory.

In this catalogue you will find the most common references that are used in international laboratories: Filter paper for routine use in laboratories, without ash, glass microfibre, microfiltration membranes, absorbent papers, syringe filters, etc. Our range is adapted to current needs while our R&D department is planning new qualitative and differentiated solutions for the future. Other options for more specific and concrete applications are offered on request by contacting our usual contact addresses.

**“Since 1998 we
have worked to
strengthen our
range of products
with a presence
on the five
continents”**



Filter Paper



Qualitative Paper

From routine filtration, through to filtration of viscous liquids such as syrups, oils and essences. Produced from virgin cellulose fibres and high quality cotton linters. This type of product is the most recommended for routine laboratory filtration operations.

Rough surface and smooth surface qualities.

Quantitative Paper

Complete range of ash-free filter paper for carrying out all kinds of quantitative analysis. Manufactured with high quality virgin cellulose fibres, then acid treated, and afterwards washed with demineralised water. Their high resistance when wet make them ideal for use in filtrations with Büchner.



Folded Filter Paper

Greater filtration speed when using the entire surface of the filter, recommended for very common processes and controls, such as the brewing industry for example. High quality cellulose with different porosities. Retention of 2 µm up to 50 µm.

Rough surface and smooth surface qualities.

Fibreglass Paper

New concept of filters manufactured with 100% binder-free microfibre glass. They offer a very appreciable filtration depth quality, with high flow rates, high load capacity and particle retention of less than 1 micron. Widely used in laboratories for various applications.



Cytocentrifuge Paper

Used in cytocentrifuges for the analysis of blood in hospitals and research laboratories. Absorption of the liquid through the absorbent paper permits the use of techniques that are faster than conventional techniques in the examination of cells. Different measurements in various types of perforations allow us to offer a variety of products.

Membrane Filters



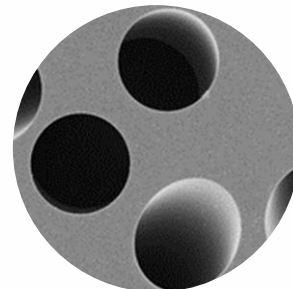
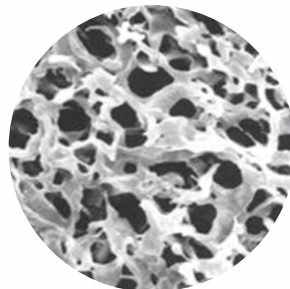
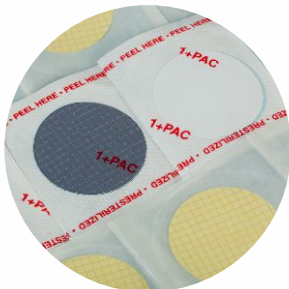
“Cutting edge technology for excellent pore uniformity”

Dorsan® membrane filters are manufactured with the latest technology for excellent pore uniformity. A wide range of levels of absorption for optimal breathability, drying and absorption.

They are suitable for chromatographic analysis and for the preparation of samples, as well as methods of absorption with gel (Southern, Northern and Western Blot tests). Dorsan® completes its offering with its popular cellulose nitrate absorption membranes with excellent protein affinity, high blocking capacity and compatible with a wide variety of detection methods.

Membrane filters...

Cellulose acetate	CA
Cellulose esters	MCE
Cellulose nitrate	NC
Nylon	NY
Polycarbonate	PCTE
Polyethersulfone	PES
Polypropylene	PP
Polytetrafluoroethylene	PTFE
Polivinildenedifloride	PVDF



Features

Uniformity throughout the sheet
High purity; not gummed and without resins
Smooth or hydrophilic surface
Uniform porosity, high flow rate
High retention capacity

Syringe Filters

We offer two sets of syringe filters.
G Series and T Series.

The G series is characterized by being manufactured with an outer ring, which gives it greater resistance, which prevents filter ruptures when working with high pressures or very dense liquids.

The T-series has a polypropylene prefilter on the membrane that helps to better prefilter solutions by extending the volume of the filtration.

“In frequent analysis using syringe filters significantly reduces the filtering time with respect to traditional membrane discs”

Features

- High filtration speed
- Low protein binding
- High particle loading capacity
- Uniform porosity
- The best value for the money

Wide range →



Cellulose Acetate (CA)
T SERIES



Mixed Cellulose Esters (MCE)
T SERIES



Nylon (NY)
T SERIES



Polyethersulphone (PES)
T SERIES



Polypropylene (PP)
T SERIES



PTFE
T SERIES



PVDF
T SERIES



Cellulose Acetate (CA)
G SERIES



Mixed Cellulose Esters (MCE)
G SERIES



Nylon (NY)
G SERIES



Polyethersulphone (PES)
G SERIES



Polypropylene (PP)
G SERIES



PTFE
G SERIES

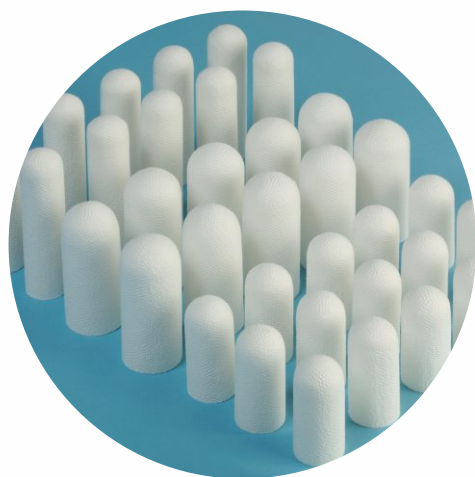


PVDF
G SERIES

Extraction Cartridges

The range of Dorsan® extraction cartridges is very wide. Made from a single piece, they are the most suitable to be used in Soxhlet laboratory extractors. They are manufactured from cellulose fibres, glass fibres and/or quartz fibres depending on the final application of the product.

In order to choose the correct cartridge, take into account that it has to pass through the narrowest part of the upper tip of the extractor. It should also be 5/10 mm longer than the height of the Soxhlet extraction chamber. The first digit represents the inner diameter and the second the outer length, both in mm.



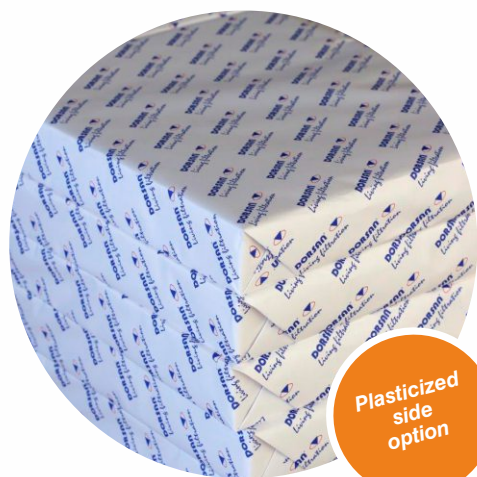
Features

- Cartridges in cellulose fibres
- Cartridges in glass microfibres
- Cartridges in quartz microfibres
- Choose from a variety of measurements
- Maximum quality

Absorbent Paper Reams

Dorsan® introduces on the market a wide variety of absorbent papers for very different applications. Whether you prefer the economic reams with a weight of 60 g or the most widely used of 73 g, in our product range you can find the one that best fits your requirements and needs. We offer the possibility of various standard measurements in sheets or spools. This type of product is being used at the work tables of laboratories in different industries: Food and beverage, chemical-pharmaceutical, cosmetic-perfume, health services, hospitals, research laboratories, etc.

We have a special quality called **Labcoat** that has polyethylene on one side. This type of product is very appreciated in industries that need perfect absorption combined with perfect protection of the worktable.



Features

- Wide variety of formats
- Excellent value for the money
- Different weights to choose



www.dorsanfiltration.com

Dorsan Germany

Brühlerstraße 49
76707 Hambrücken (Baden-Württemberg)
Tel. +49 (0) 7255 3971142
germany@dorsanfiltration.com

Dorsan India

A-102, Oxford Avenue, Opp. C. U. Shah College,
Nr. Income Tax Circle, Ashram Road, Ahmedabad,
Gujarat, India 380014
Tel. +91 079 2754 2161
india@dorsanfiltration.com

Dorsan Mexico

Ángel Romero 9, Lomas del Colli
45010 Zapopan Jalisco
Tel. +52 33 3852 5733
mexico@dorsanfiltration.com

Dorsan Spain

Dr. Pujadas 61
08700 Igualada, Barcelona
Tel. +34 938 042 475
spain@dorsanfiltration.com